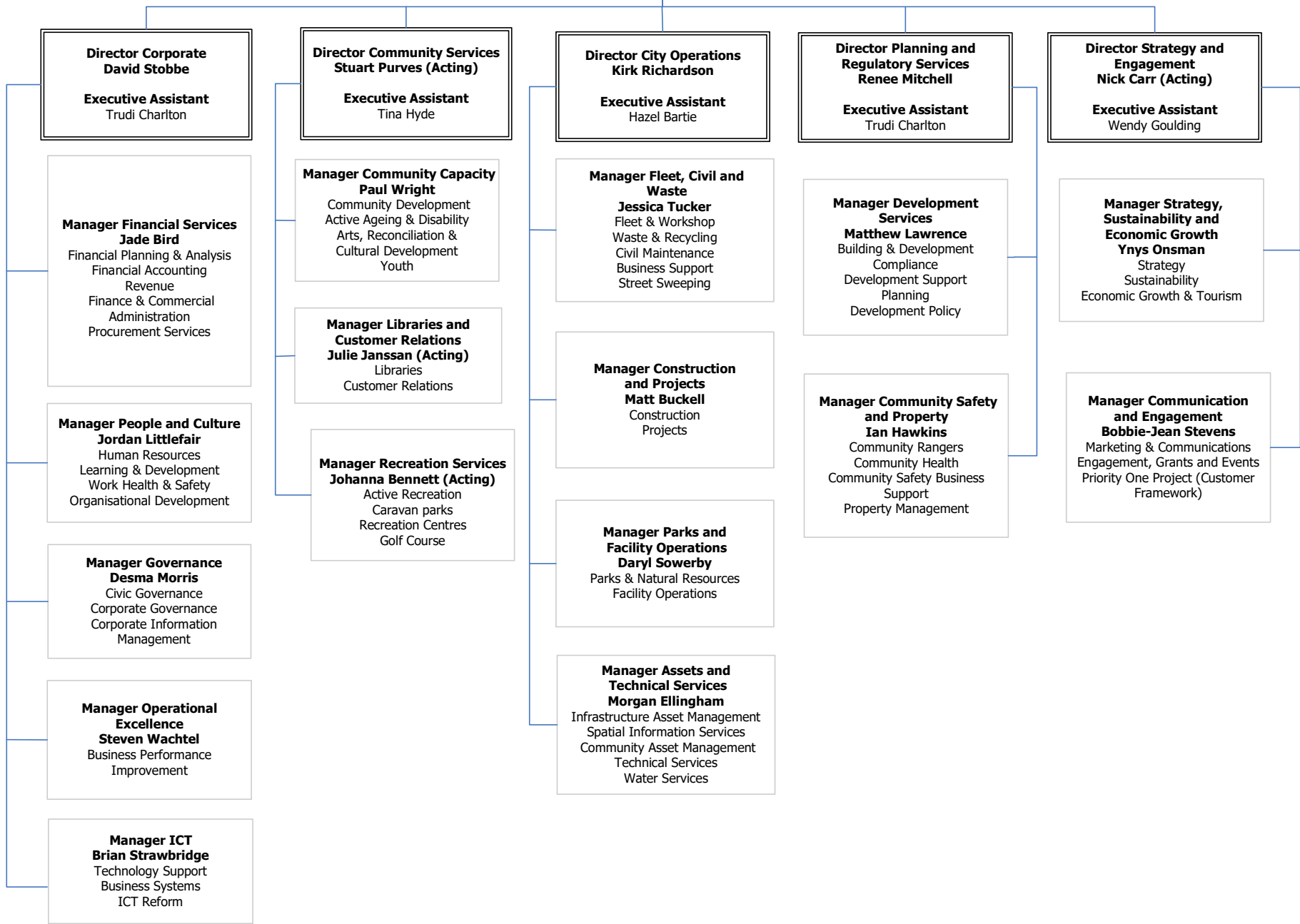


# Organisational Overview



**Chief Executive Officer**  
Julia Grant (Acting)

**Executive Officer**  
Karen Carter



**Director Corporate**  
David Stobbe

**Executive Assistant**  
Trudi Charlton

**Manager Financial Services**  
Jade Bird

Financial Planning & Analysis  
Financial Accounting  
Revenue  
Finance & Commercial Administration  
Procurement Services

**Manager People and Culture**  
Jordan Littlefair

Human Resources  
Learning & Development  
Work Health & Safety  
Organisational Development

**Manager Governance**  
Desma Morris

Civic Governance  
Corporate Governance  
Corporate Information Management

**Manager Operational Excellence**  
Steven Wachtel

Business Performance Improvement

**Manager ICT**  
Brian Strawbridge

Technology Support  
Business Systems  
ICT Reform

**Director Community Services**  
Stuart Purves (Acting)

**Executive Assistant**  
Tina Hyde

**Manager Community Capacity**  
Paul Wright

Community Development  
Active Ageing & Disability  
Arts, Reconciliation & Cultural Development  
Youth

**Manager Libraries and Customer Relations**  
Julie Janssan (Acting)

Libraries  
Customer Relations

**Manager Recreation Services**  
Johanna Bennett (Acting)

Active Recreation  
Caravan parks  
Recreation Centres  
Golf Course

**Director City Operations**  
Kirk Richardson

**Executive Assistant**  
Hazel Bartie

**Manager Fleet, Civil and Waste**  
Jessica Tucker

Fleet & Workshop  
Waste & Recycling  
Civil Maintenance  
Business Support  
Street Sweeping

**Manager Construction and Projects**  
Matt Buckell

Construction Projects

**Manager Parks and Facility Operations**  
Daryl Sowerby

Parks & Natural Resources  
Facility Operations

**Manager Assets and Technical Services**  
Morgan Ellingham

Infrastructure Asset Management  
Spatial Information Services  
Community Asset Management  
Technical Services  
Water Services

**Director Planning and Regulatory Services**  
Renee Mitchell

**Executive Assistant**  
Trudi Charlton

**Manager Development Services**  
Matthew Lawrence

Building & Development  
Compliance  
Development Support  
Planning  
Development Policy

**Manager Community Safety and Property**  
Ian Hawkins

Community Rangers  
Community Health  
Community Safety Business Support  
Property Management

**Director Strategy and Engagement**  
Nick Carr (Acting)

**Executive Assistant**  
Wendy Goulding

**Manager Strategy, Sustainability and Economic Growth**  
Ynys Onsman

Strategy  
Sustainability  
Economic Growth & Tourism

**Manager Communication and Engagement**  
Bobbie-Jean Stevens

Marketing & Communications  
Engagement, Grants and Events  
Priority One Project (Customer Framework)