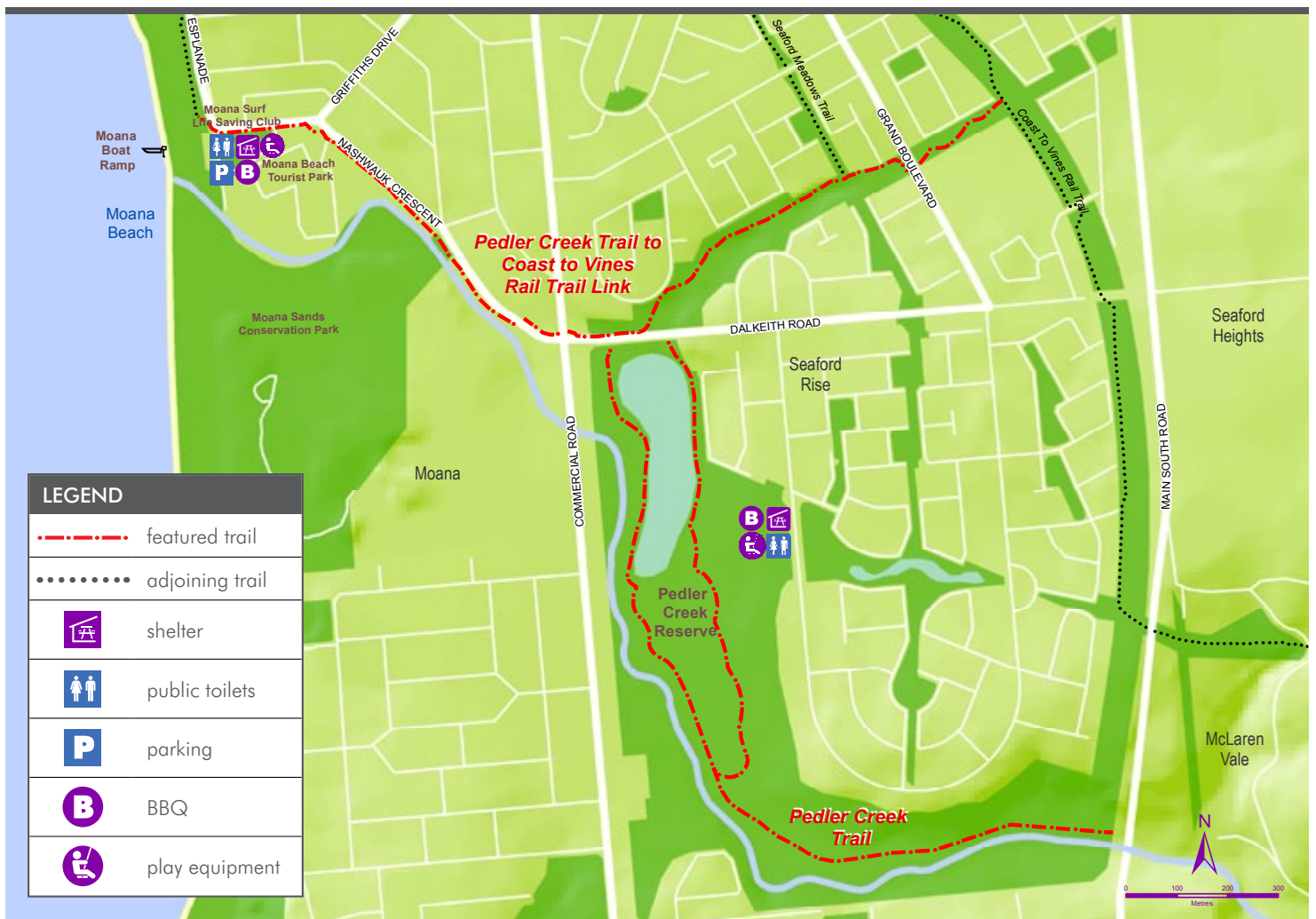


Pedler Creek Trail

Trail length:	2km
Difficulty level:	easy-moderate
Access:	walking, cycling, horse riding
Setting/experience:	creek and reserve linear trail

This shared use path trail provides a local link from Seaford Meadows to Moana and offers stunning scenery along the full length of the trail. It follows the Pedler Creek riverine corridor from the Coast to Vines Rail Trail in Seaford Meadows where there are some moderately sloping sections, and links to the Coast Park Trail at Moana via the shared use path along Nashwauk Crescent. The trail also extends southwards through the Pedler Creek Reserve and wetlands which frequently features abundant birdlife and has large areas of landscaped open space.



www.onkaparingacity.com | (08) 8384 0666

