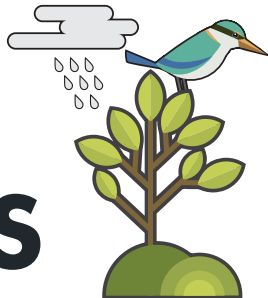


# EVERY DROP COUNTS



**Your street will benefit from a new stormwater reuse system.**

Rainwater which would otherwise be lost, will be captured and used to feed street trees and plants using a new system of TREENET Inlets.

Look out for these new inlets in your street.

**SUSTAINABLE ON KAPARINGA** 



## How do the inlets benefit your street?

- Each inlet captures more than 10,000 litres of water in an average year.
- This additional water helps the street plants and trees to grow and thrive.
- Healthy plants and trees make your street greener and more attractive.
- Trees also provide shade to help keep your street cooler in hot weather.

## What if it has been very dry?

Feel free to top up the inlets by pouring in some water. This will help to keep your street trees green and healthy.

[www.onkaparingacity.com/inlets](http://www.onkaparingacity.com/inlets)

## How the inlets work

